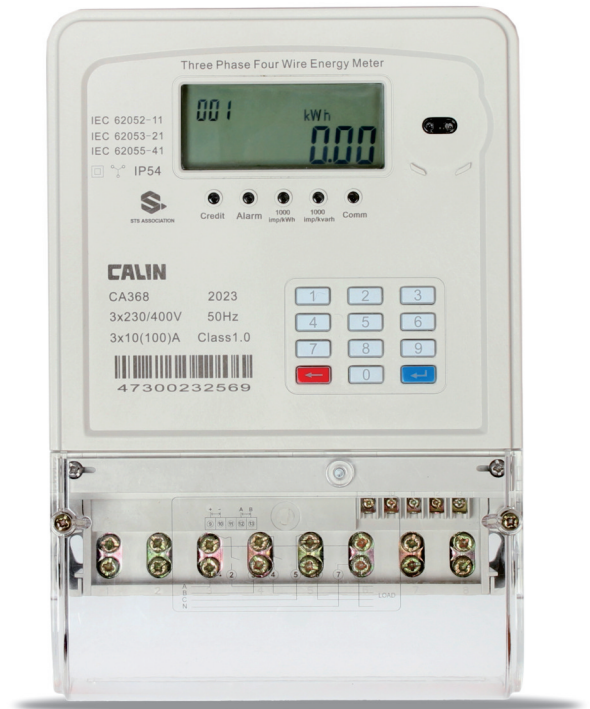


CA368-WS21

Three Phase Keypad Electricity Meter

The CA368-WS21 is a three-phase multi-function meter with embedded communication modules. The meter is used to accurately measure electrical energy for commercial, industrial, and residential customer and is suitable for environments with unstable voltage.

This meter can be used for prepayment (Comply with STS standard) and post payment applications (optional by company), The CA368-WS21 has outstanding anti-tamper feature like terminal cover open detection sensor to help utility for revenue protection. The CA368-WS21 can utilize PLC, RF or Cable communication to CIU as an option.



Main Features

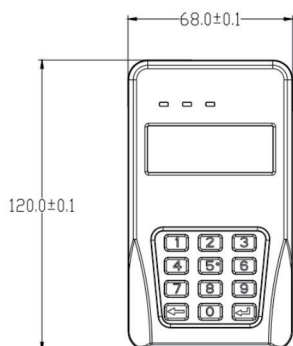
- Multi-Tariff
- DLMS / COSEM
- 20 digit STS encryption
- Tamper detection and record
- Import & export measurement
- LCD display, read without power
- Infrared port / RS485/ RF(optional)
- Disconnects on overload and no credit
- Programmable power limit and low credit warning
- Dual power source swap between grid supply and solar
- Maximum demand measurement and load profiling (on request)



Split Configuration for Increased Revenue Protection

The meter consists of two parts, the MCU (Metering & Control Unit) and CIU (Customer Interface Unit). The MCU and CIU is linked via galvanically-isolated 2-wire communication cable or RF communication is also available on request.

The CIU is installed within consumer's home for prepaid token input and info inquiry, while MCU is installed in a meter cabinet away from consumers.



ELECTRICAL PARAMETERS

VOLTAGE/FREQUENCY/CURRENT

Nominal voltage U_n	3x230/240V
Limited voltage	60%~120% U_n
Frequency	50/60Hz+5%
Basic current(I_b)	10A
Maximum current(I_{max})	100A
Starting current(I_{st})	30mA
Active energy constant	1000imp/kWh

ACCURACY

Active energy IEC62053 - 21	Class1.0
Reactive energy IEC62053 - 23	Class2.0

BURDEN

Voltage circuit	<2W <8VA
Current circuit	<1VA

TEMPERATURE RANGE

Operation meter	-25°C~+70°C
Storage	-40°C~+85°C

INSULATION

Insulation level	4kV rms 1min
Voltage impulse withstand	8kV 1.2/50 μ s

ELECTRO MAGNETIC COMPATIBILITY

ELECTROSTATIC DISCHARGES

Contact discharge	8kV
Air discharge	15kV

ELECTROMAGNETIC RF FIELDS

27MHz to 500MHz typical	10V/m
100kHz to 1GHz typical	30V/m
Fast transient burst test	4kV

MECHANICAL REQUIREMENTS

Meter shell Protection Rate	IP54
Insulation System Classification	Protective Class II
Maximum cable size	10 mm

